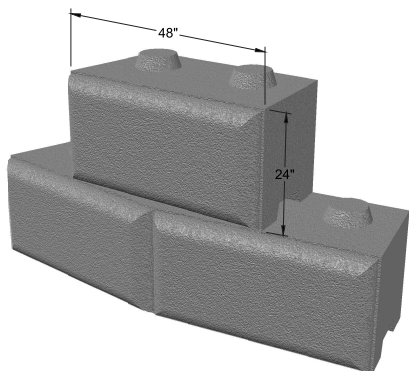




# RUGGED ROCK



## Advantages

- Easy to install with small equipment
- More durable 5,000 psi concrete mix
- Full block capable of an 18' radius curved wall
- Gravity wall to 6' tall, no geogrid required
- Mechanically stabilized wall with geogrid
- Corner blocks for 90 degree corner
- Top blocks allow you to grade to face of wall
- Natural rock face, aesthetically pleasing
- Know & keyway create natural setback

Get the **RUGGED ROCK** Advantage

### *The right size block for the job!*

Larger than those masonry blocks for quicker installation, and smaller than the large blocks which give you more flexibility in forming a radius or in tight areas.



VISIT OUR WEB SITE

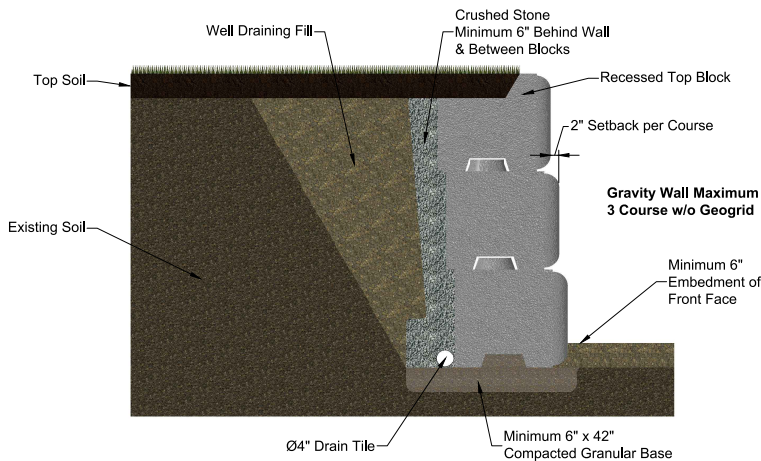
[www.americanconcrete.com](http://www.americanconcrete.com)

1022 Minot Ave. Auburn, ME 04210  
Tel: 207-784-1388 • 800-638-9000  
Fax: 207-783-4039

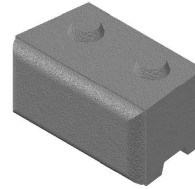
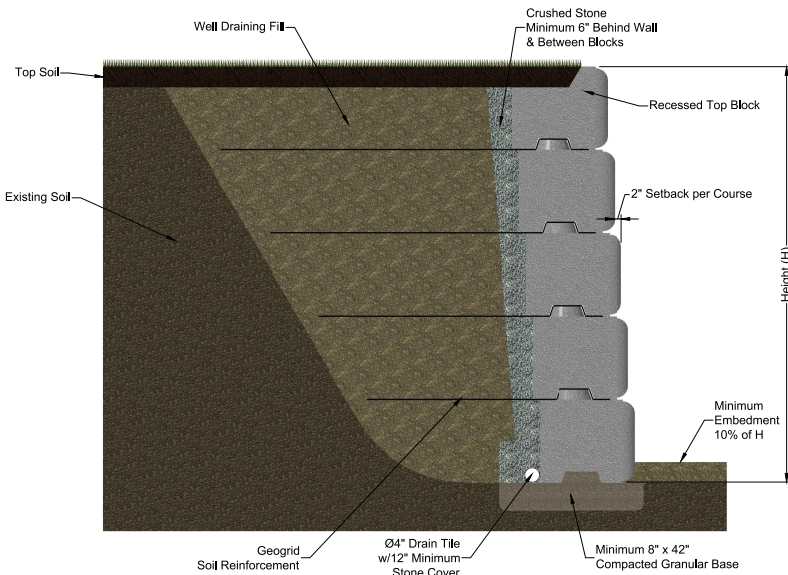
1717 Stillwater Ave. Veazie, ME 04401  
Tel: 207-947-8334 • 800-432-7843  
Fax: 207-947-3580

Get the **RUGGED ROCK** Advantage

**Gravity Wall**

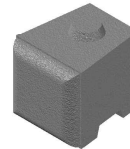


**Soil Reinforced Wall**



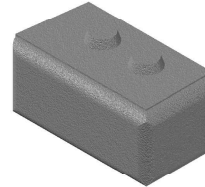
**Full Block**

Width: 4 ft      Weight: ~2,400#  
 Height: 2 ft      Wall Area: 8 ft<sup>2</sup>  
 Depth: 2.3 ft



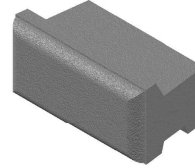
**Half Block**

Width: 2 ft      Weight: ~1,200#  
 Height: 2 ft      Wall Area: 4 ft<sup>2</sup>  
 Depth: 2.3 ft



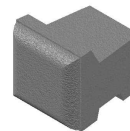
**Corner Block**

Width: 4.3 ft      Weight: ~2,700#  
 Height: 2 ft      Wall Area: 13 ft<sup>2</sup>  
 Depth: 2.3 ft



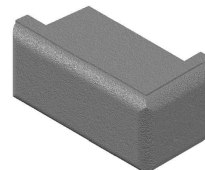
**Full Recessed Top Block**

Width: 4 ft      Weight: ~2,000#  
 Height: 2 ft      Wall Area: 8 ft<sup>2</sup>  
 Depth: 2.3 ft



**Half Recessed Top Block**

Width: 4 ft      Weight: ~1,000#  
 Height: 2 ft      Wall Area: 4 ft<sup>2</sup>  
 Depth: 2.3 ft



**Corner Recessed Top Block**

Width: 4.3 ft      Weight: ~2,300#  
 Height: 2 ft      Wall Area: 13 ft<sup>2</sup>  
 Depth: 2.3 ft      Price:



**American Concrete Industries**  
 Manufacturers of Quality Precast Concrete Products  
**Web Site: [www.americanconcrete.com](http://www.americanconcrete.com)**

1022 Minot Ave. Auburn, ME 04210  
 Tel: 207-784-1388 • 800-638-9000  
 Fax: 207-783-4039

1717 Stillwater Ave. Veazie, ME 04401  
 Tel: 207-947-8334 • 800-432-7843  
 Fax: 207-947-3580