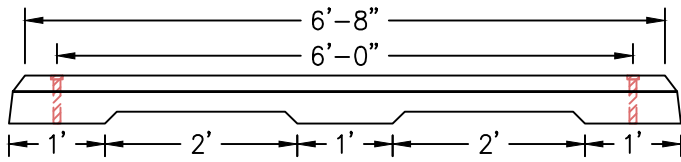




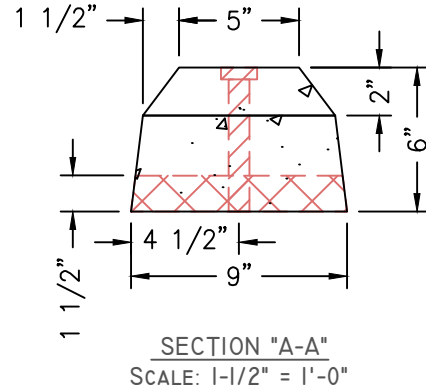
American Concrete Industries

Parking Lot Curbing - Type 3 (9"W x 6"H) (2-Sided)

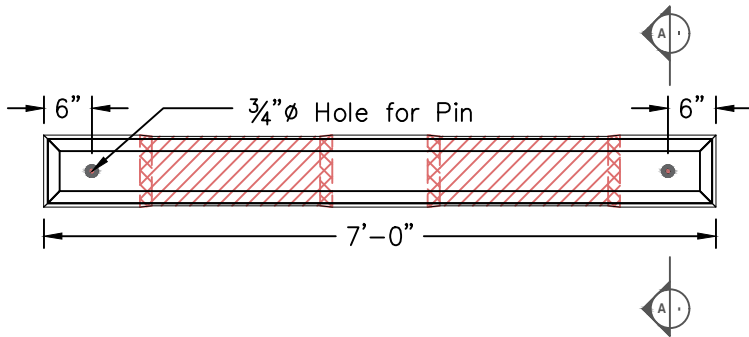
WWW.AMERICANCONCRETE.COM
1717 STILLWATER AVE.
VEAZIE, ME. 04401
TEL: (207) 947-8334
FAX: (866) 414-9083



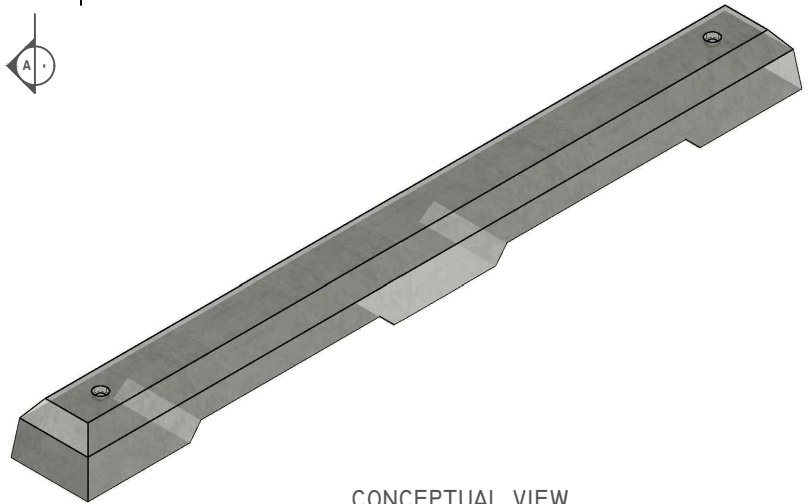
ELEVATION VIEW



SECTION "A-A"
SCALE: 1-1/2" = 1'-0"



PLAN VIEW



CONCEPTUAL VIEW
NTS

MANUFACTURING NOTES

- 1.1. CONCRETE COMPRESSIVE STRENGTH: 5000PSI @ 28 DAYS
- 1.2. AIR ENTRAINMENT: 4-6%
- 1.3. GRADE 60 REINFORCEMENT, (4) #3 BARS
- 1.4. TYPE 3 - 2-SIDED CURB FOR USE IN CENTER OF PARKING LOT.
- 1.5. RECOMMENDED TO BE SET & PINNED ON TOP OF ASPHALT PAVEMENT.

PHYSICAL SPECIFICATIONS:

7'-0" L WEIGHT: 290 LBS ITEM#: 311370