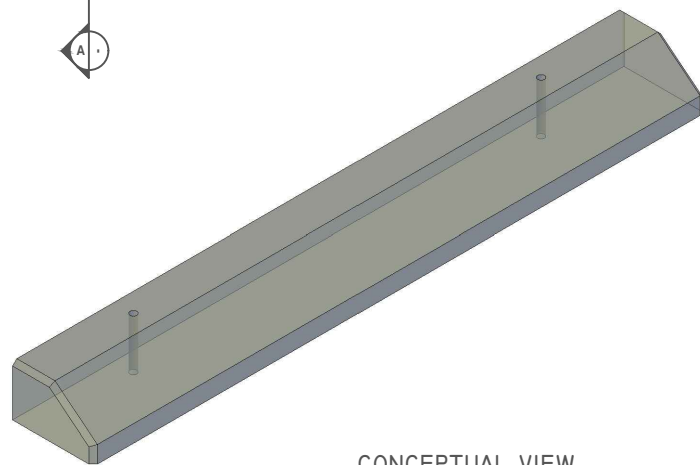
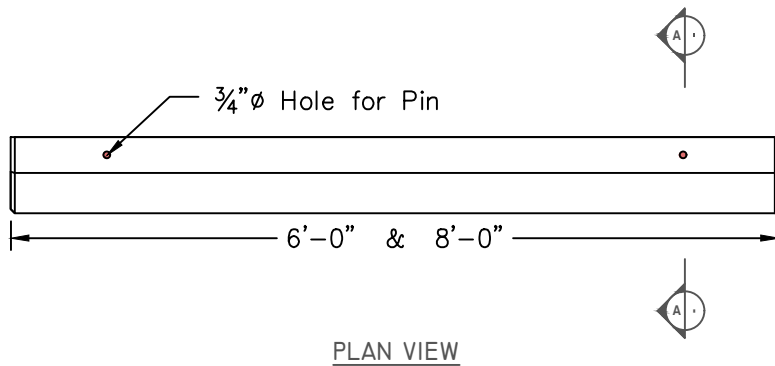
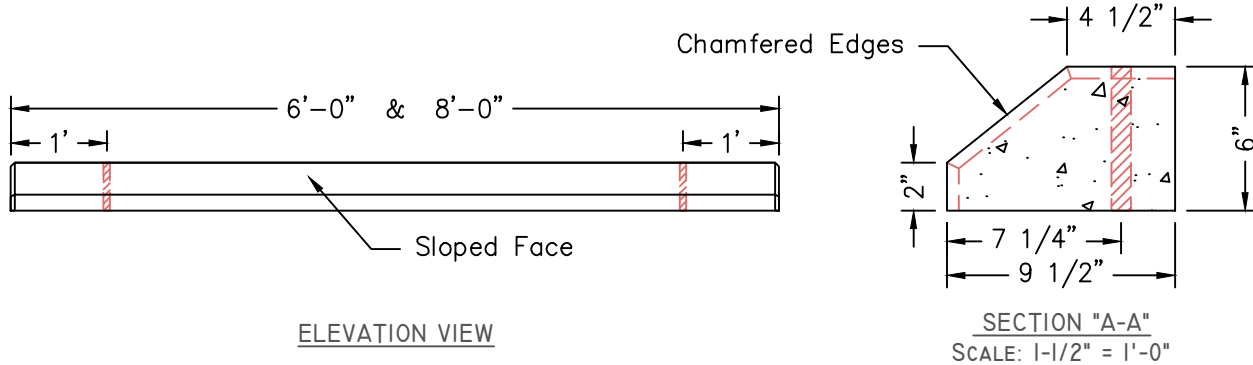




American Concrete Industries

Parking Lot Curbing - Type 2 (9.5"W x 6"H) (1-Sided)

WWW.AMERICANCONCRETE.COM
 1717 STILLWATER AVE.
 VEAZIE, ME. 04401
 TEL: (207) 947-8334
 FAX: (866) 414-9083



MANUFACTURING NOTES

- 1.1. CONCRETE COMPRESSIVE STRENGTH: 5000PSI @ 28 DAYS
- 1.2. AIR ENTRAINMENT: 4-6%
- 1.3. GRADE 60 REINFORCEMENT, (4) #3 BARS
- 1.4. TYPE 2 - 1-SIDED CURB FOR USE ALONG EDGE OF PARKING LOT.
- 1.5. RECOMMENDED TO BE SET & PINNED ON TOP ASPHALT PAVEMENT.

PHYSICAL SPECIFICATIONS:

6'-0" L WEIGHT: 295 LBS ITEM#: 311350
 8'-0" L WEIGHT: 395 LBS ITEM#: 311360