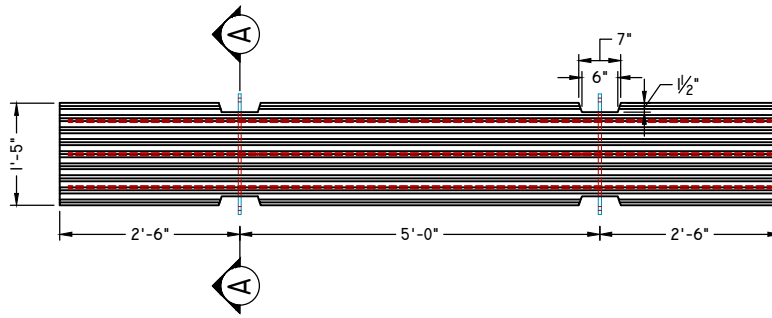
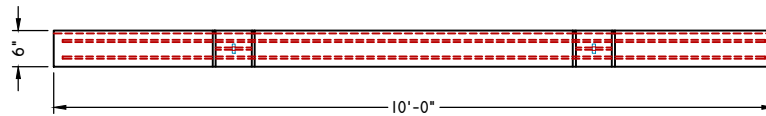




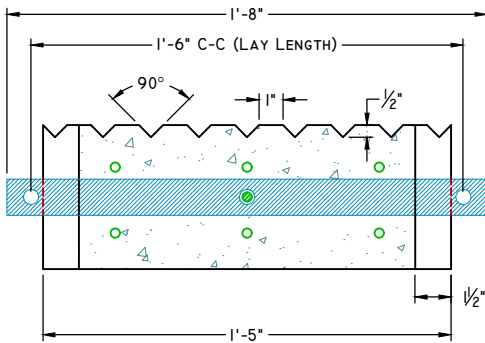
## 10'x17"x6" BOAT LAUNCH SLABS



**PLAN VIEW**

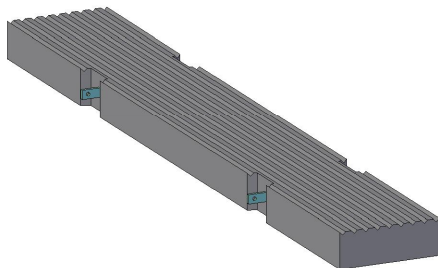


**ELEVATION VIEW**



**SECTION A-A**

SCALE: 1-1/2" = 1'-0"



**CONCEPTUAL VIEW**

SCALE: NTS

### SPECIFICATIONS:

#### 1. CONCRETE:

##### A. COMPRESSIVE STRENGTH @ 28 DAYS:

- 4000 PSI (TYP.)
- 5000 PSI (SALT WATER USE)

##### B. AIR ENTRAINED: 5-6%

##### C. GRADE 60 REBAR

- #3 REBAR (TYP.)
- #4 REBAR
- #5 REBAR
- EPOXY COATED (SALT WATER USE)

##### D. CORROSION INHIBITOR

- YES (SALT WATER USE)
- NO

#### 2. TIE BARS

##### A. STEEL TYPE

- PLAIN (TYP.)
- GALVANIZED
- STAINLESS STEEL

##### B. TIE HOLE

- 5/8" DIA. (TYP.)
- 3/4" DIA.

##### C. CONNECTION HARDWARE FURNISHED BY OTHERS

WEIGHT: 1,020 LBS