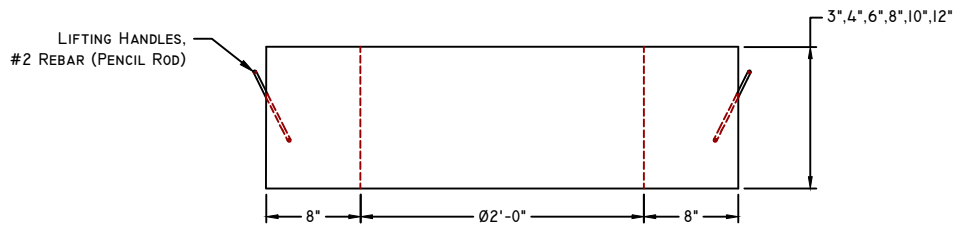
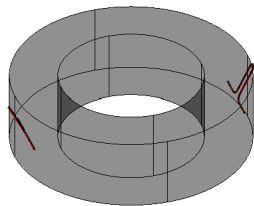


PLAN VIEW



ELEVATION VIEW



CONCEPTUAL VIEW

SCALE: NTS

Manufacturing Notes

- 1.1. CONCRETE COMPRESSIVE STRENGTH: 4000PSI @ 28 DAYS
- 1.2. AIR ENTRAINMENT: 4-6%
- 1.3. INSTALLATION: MORTAR EACH DONUT RISER, REMOVE HANDLES OR BEND IN & POLY WRAP TO MITIGATE FROST INTERACTION

Physical Specifications:

3" Riser (#257203):	209 lbs
4" Riser (#257204):	279 lbs
6" Riser (#257206):	419 lbs
8" Riser (#257208):	559 lbs
10" Riser (#257210):	698 lbs
12" Riser (#257212):	838 lbs