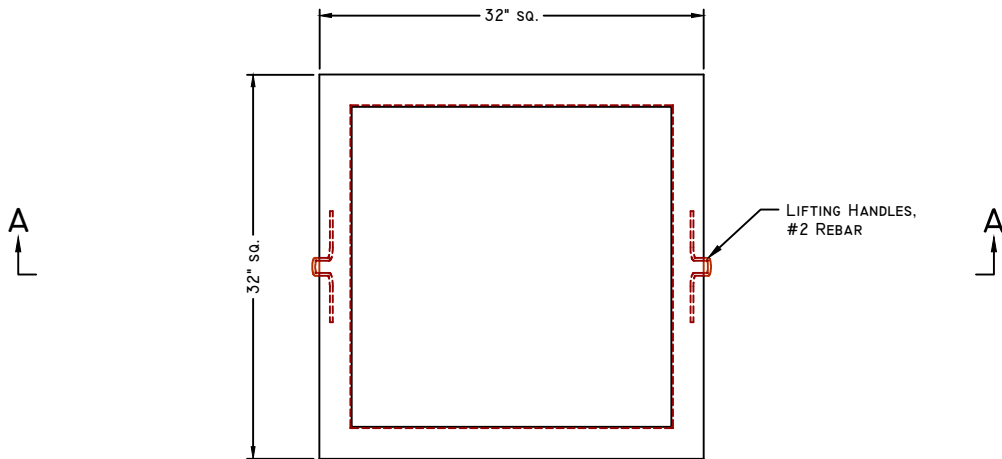
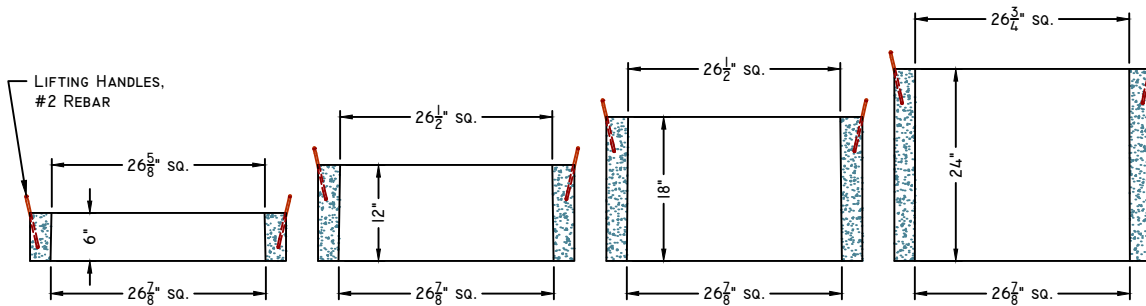




LIFT STATION RISERS & COVER



PLAN VIEW



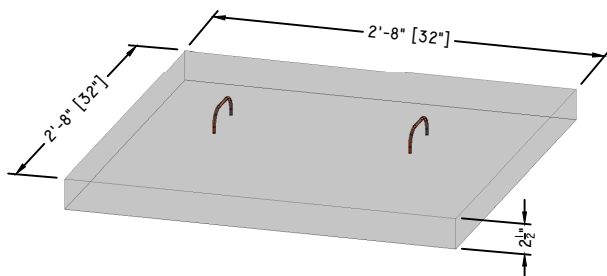
6" SECTION*

12" SECTION*

18" SECTION*

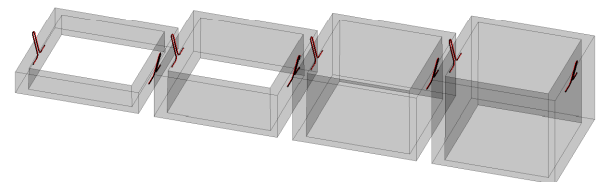
24" SECTION*

*SCALE: 1/2" = 1'-0"



COVER SECTION

SCALE: NTS



Manufacturing Notes

- 1.1. CONCRETE COMPRESSIVE STRENGTH: 4000PSI @ 28 DAYS
- 1.2. AIR ENTRAINMENT: 4-6%
- 1.3. FIBER REINFORCEMENT & GRADE 60 REINFORCEMENT
- 1.4. RECOMMEND JOINTS SEALED W/ BUTYL RUBBER JOINT SEALANT - EACH JOINT: ~9.9' SEALANT
- 1.5. RISERS DESIGNED TO KEEP EXISTING COVER IN PLACE

Physical Specifications:

6" Riser (#283010):	160 lbs
12" Riser (#283020):	325 lbs
18" Riser (#283030):	488 lbs
24" Riser (#283040):	636 lbs
Cover (#281050):	222 lbs