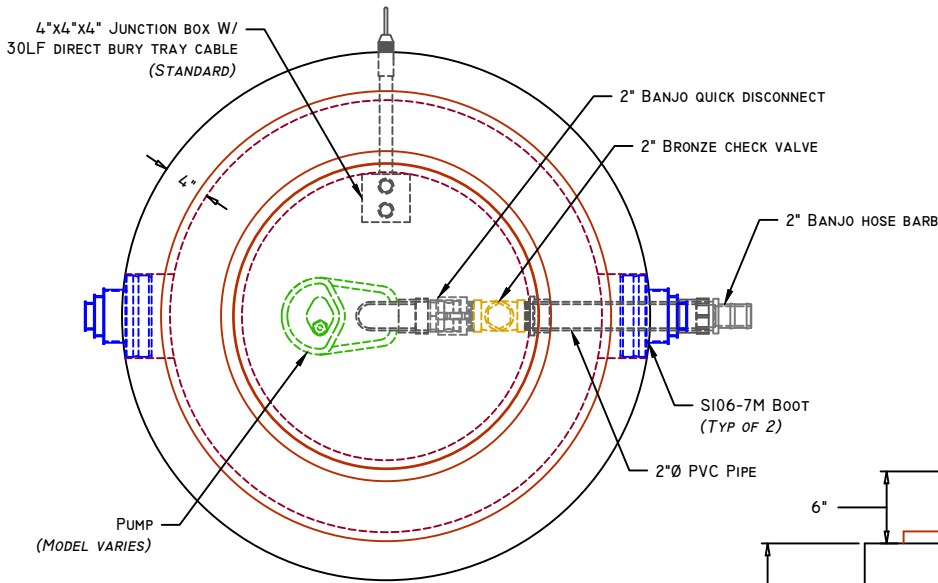
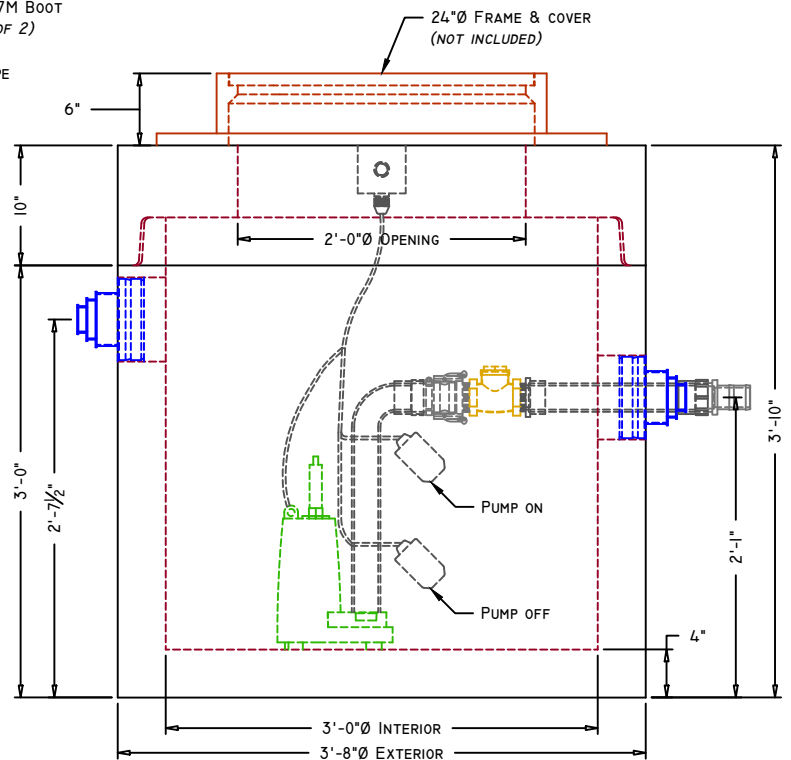




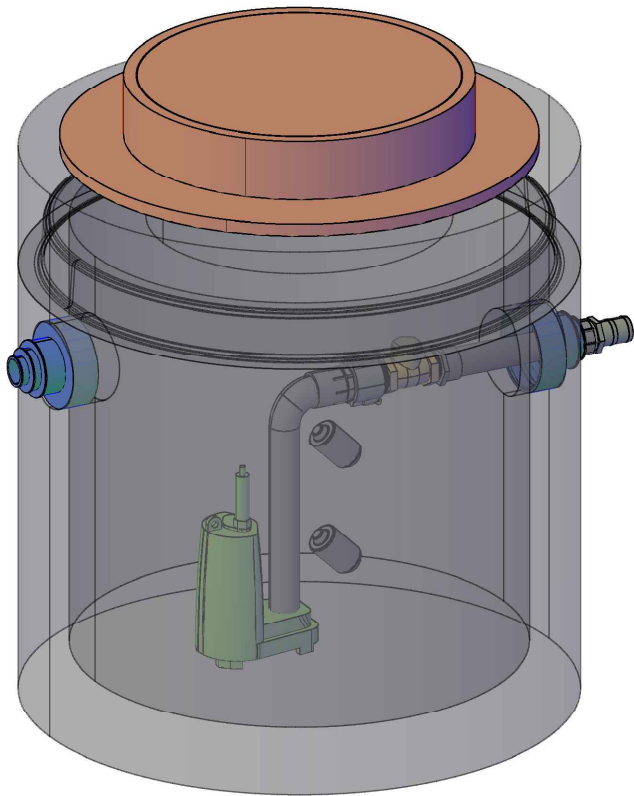
## 3'x3' MAN HOLE PUMP TANK



**PLAN VIEW**



**ELEVATION VIEW**



**CONCEPTUAL VIEW - NTS**

**Manufacturing Notes**

- 1.1. CONCRETE COMPRESSIVE STRENGTH: 4000PSI @ 28 DAYS
- 1.2. AIR ENTRAINMENT: 4-6%
- 1.3. GRADE 60 REINFORCEMENT
- 1.4. DESIGNED FOR H2O LOAD RATING
- 1.5. REQUIRES GRADE RINGS TO GRADE & H2O FRAMES & COVERS
- 1.6. ALL TANK PENETRATIONS ARE INTEGRALLY CAST
- 1.7. ALL JOINTS SEALED W/ BUTYL RUBBER JOINT SEALANT

**Physical Specifications:**

Cover Weight:	645 lbs
Base Weight:	1,980 lbs
Total Weight:	2,625 lbs
Capacity:	52.95 Gal / VF