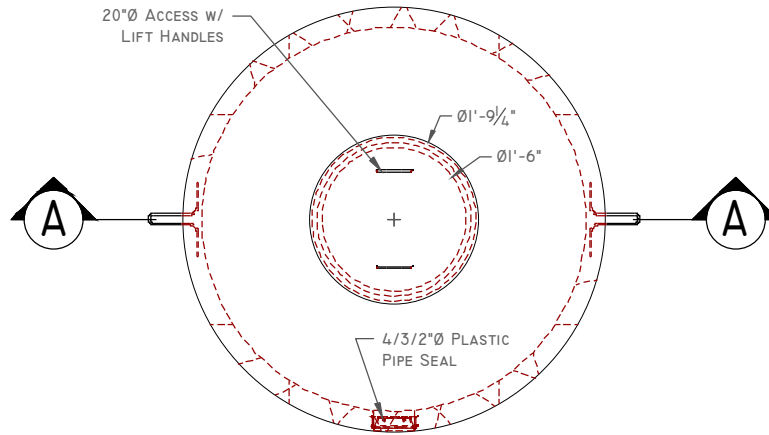
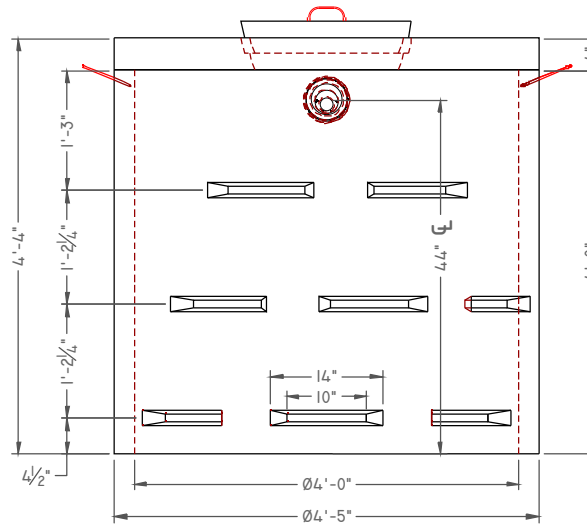




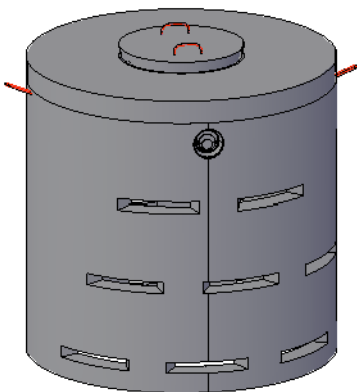
## 4'Ø DRY WELL



**PLAN VIEW**



**SECTION A-A**



**CONCEPTUAL VIEW**

SCALE: NTS

**Manufacturing Notes**

- 1.1. CONCRETE COMPRESSIVE STRENGTH: 4000PSI @ 28 DAYS
- 1.2. AIR ENTRAINMENT: 4-6%
- 1.3. GRADE 60 REINFORCEMENT
- 1.4. RECOMMEND JOINTS SEALED W/ BUTYL RUBBER JOINT SEALANT (NON-TOXIC AVAILABLE FOR POTABLE SYSTEMS)

**Physical Specifications:**

Dry Well Barrel (#246160):	1,584 lbs
4' Well Tile Cover Weight (#246130):	766 lbs