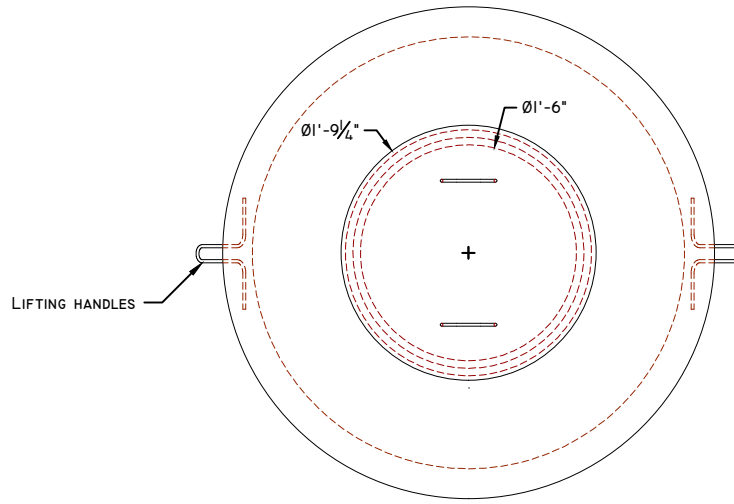
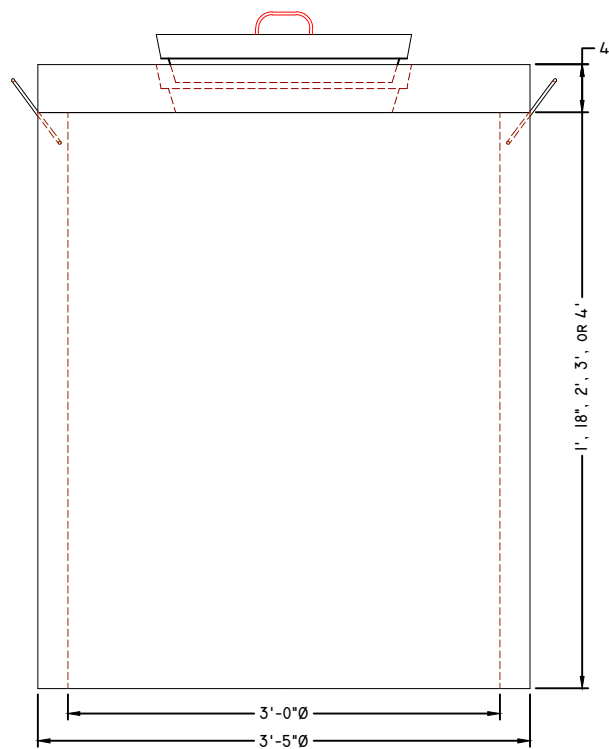




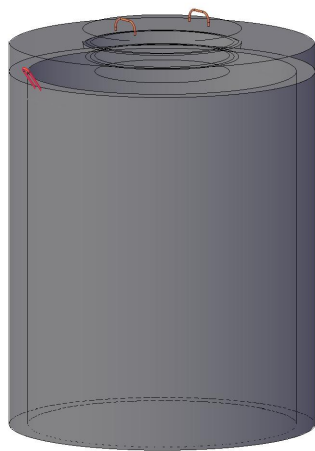
3'Ø WELL TILE



PLAN VIEW



SECTION VIEW



CONCEPTUAL VIEW
 SCALE: NTS

Manufacturing Notes

- 1.1. CONCRETE COMPRESSIVE STRENGTH: 4000PSI @ 28 DAYS
- 1.2. AIR ENTRAINMENT: 4-6%
- 1.3. FIBER REINFORCED
- 1.4. RECOMMEND JOINTS SEALED W/ BUTYL RUBBER JOINT SEALANT (NON-TOXIC AVAILABLE FOR POTABLE SYSTEMS)

Physical Specifications:

3'Ø WT Cover (#246060):	458 lbs
3'Øx4' Well Tile (#246050):	1,260 lbs
3'Øx3' Well Tile (#246040):	945 lbs
3'Øx2' Well Tile (#246030):	630 lbs
3'Øx18" Well Tile (#246020):	472 lbs
3'Øx1' Well Tile (#246010):	314 lbs