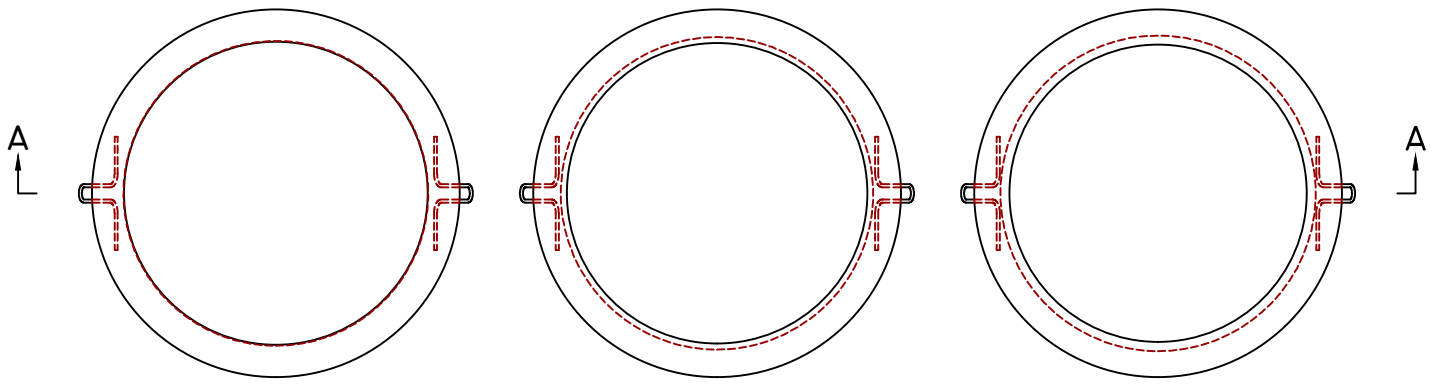
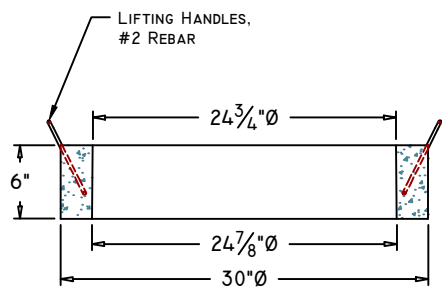




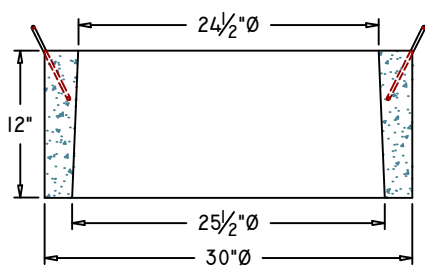
## ROUND RISERS & COVER



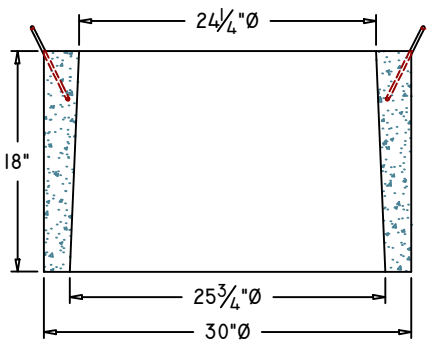
**PLAN VIEW**



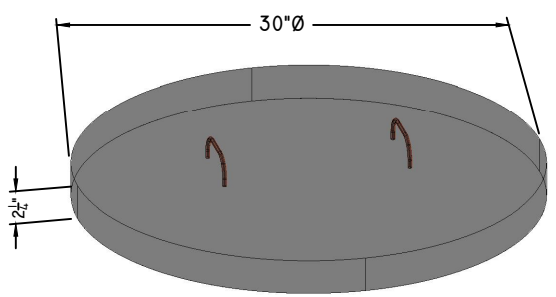
**6" SECTION**



**12" SECTION**



**18" SECTION**



**COVER SECTION**

SCALE: NTS

**Manufacturing Notes**

- 1.1. CONCRETE COMPRESSIVE STRENGTH: 4000PSI @ 28 DAYS
- 1.2. AIR ENTRAINMENT: 4-6%
- 1.3. FIBER REINFORCEMENT & GRADE 60 REINFORCEMENT
- 1.4. RECOMMEND JOINTS SEALED W/ BUTYL RUBBER JOINT SEALANT - EACH JOINT: ~7.4' SEALANT
- 1.5. RISERS DESIGNED TO KEEP EXISTING COVER IN PLACE

**Physical Specifications:**

<b>6" Riser</b>	(#282010):	116 lbs
<b>12" Riser</b>	(#282020):	224 lbs
<b>18" Riser</b>	(#282030):	337 lbs
<b>Cover</b>	(#282040):	138 lbs